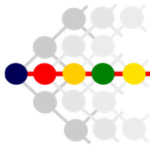


# CoreComm International

The Leader in Strategic  
Data-Driven Business Solutions



# About Us

## Data Driven & Outcome Focused

Deploying the world's first & only AI-enhanced Team Performance Assessment Platform, CoreComm International (CCI) consultants & field specialists apply their extensive professional experience, strategic design-thinking approach and insight, helping clients connect their people & culture to their strategy & vision.



## Management Consultants

CoreComm International is a boutique consulting group of highly experienced management and operations specialists.

Through information, we believe all things are connected – from people to systems to strategy. To maximize these connections and drive outcomes, CoreComm International helps you harness the power of 3D Human Data Intelligence to deliver in 3 Mission-Critical areas: Enhanced Employee Engagement; Enhanced Team Performance; and Enhanced Organizational Resilience.

CCI specialists work with select clients that are dedicated professionals, focused on delivering exceptional value to their own clients. We work with clients who understand the importance of trust, communication and commitment to identify, target and achieve their strategy & vision, moving them to the next level of competency and success.

From leadership to your bottom-line, enhancing your performance impact in all areas of operations is our mission.

## Foundational Pillars

Through information, all things are connected – from people to systems to strategy. To maximize these connections and drive outcomes, organizations must first begin with their people.

To do this, they must first enhance 3 Core Foundational Pillars:

- ✓ Core Communication
- ✓ Core Competencies
- ✓ Core Performance

To achieve this, our teams deploy a multi-lens AI-enhanced approach combined with transformational professional skill development and integrated assessment technologies, empowering your people to build forward resilience in all areas.



### CORE COMMUNICATION

---

Communication is a foundational skill set that individuals, teams and organizations must have. From building better teams to driving innovation, from achieving goals to building strategy, it begins with Foundational Core Communication skills. We help your teams build the right core communication skills to align them with your organizational strategy, goals & vision.



### CORE COMPETENCIES

---

CCI's Multi-Lens transformational skill development, integrated technologies and 3D psychometric assessment & monitoring empowers your organization to identify & build the core competencies and skills needed to achieve your strategy and build forward-resilience faster.



### CORE PERFORMANCE

---

CCI empowers your teams to become faster, more engaged, more flexible, and more resilient, so your teams achieve increased performance, and align and deliver on your strategy and vision more successfully.

## Benefits of Enhancement

Digital transformation, expanded trust networks, and reduced cyber threats all contribute to organizational resilience, yet many organizations overlook the most crucial component: their people

It begins with resilient employees - communication, skill sets, competencies, strategic alignment & confidence. **Organizational Resilience starts & begins with resilient employees who are Engaged, Aligned, and Empowered.**

From line staff to leaders at all levels, enhancing their strategic core skills and competencies leads to 3 Mission Critical Outcomes: Enhanced Employee Engagement, Enhanced Team Performance and Enhanced Organizational Resilience.

### Enhanced Employee Engagement

#### 1. Drive Better Strategy-Aligned Decisions Faster

With our dedicated Team-Performance Assessment Platform delivering 3-D human data-intelligence, HR professionals and Team Leaders can now easily and objectively measure the organization's unique human factors, gaining deeper insights into current and candidate employees and teams. These Mission-Critical Deep-Data Insights identify employee and team core strengths, competencies & risks. This enables leaders to drive better strategy-aligned decisions leading to better business outcomes, solving business challenges faster.

#### 2. Gain Increased Employee Productivity + Satisfaction + Loyalty

CCI deploys the worlds 1st & only Team Performance-Dedicated assessment platform with 100's of Key Human Dimensions to identify and measure employee core competencies, skills, and performance, supported by our curated and transformative solutions that enhance employees engagement empowering them to apply their new strategy-aligned skills & competencies immediately, and driving their motivation, productivity, and loyalty.

#### 3. Decreased Employee Turnover - Replacement Costs - Training Costs

With enhanced engagement, employees become more cognitively committed, leading to increased employee & team stability, knowledge retention and commitment to the organization. This also results in less workplace stress, burnout and lower absenteeism/ presenteeism, while further reducing employee turnover and replacement costs.

In addition, enhanced employee engagement directly reduces unnecessary training costs, maximizes your Return on Training (ROT) & Return on Investment (ROI) and makes recruitment easier.

## Enhanced Team Performance

### 1. Teams Become Faster- More Flexible – More Resilient.

CCI Team Performance assessments and integrated training & development, enables teams to learn and develop the skills & competencies that are actually needed to improve their unique performance requirements. Teams experience curated mission-critical training based on real-time data and MIRA insights for increased engagement, ROI contribution and performance.



### 2. Duplicate High-Performance Team DNA.

With user-friendly interactive dashboards, create customized Digital Twin Teams, optimizing team composition for higher performance based on your unique KPIs. Your optimized virtual teams provide a High-Performance Team blueprint that can be applied to real teams, enabling them to achieve their goals & targets faster, smarter, and more confidently.

### 3. Identify Insights, Risks & Compatibilities Fast.

Continuous survey feedback lets organizations track short and long-term team & individual performance, revealing new insights, alignment with goals, vision, and culture. Also, potential risks are identified before they occur, helping you make better decisions to avoid risk, while driving strategy, deeper engagement, and achievement.

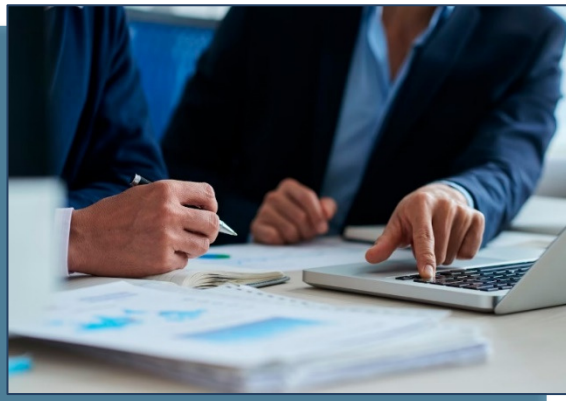
## Enhanced Organization Resilience

### 1. Enhanced Company Reputation & Stability.

Our integrated In-depth Data-Driven Team Evaluations & transformative training build and enhance staff Core Competencies & Core Skills, delivering improved employee Retention, Commitment & Performance.

### 2. Achieve Superior Team Performance.

With our interactive Team dashboards you can build Digital Twin Teams to quantify and track your team dynamics & development, ensuring your organization has the right people aligned on the right team with the right talents.



### 3. Expanded Communication, Innovation & Leadership.

With enhanced employee fulfillment and motivation plus enhanced Team Performance, your organization builds more successful trust networks and organizational culture.

These all combine to enable improved employee response and engagement; enhanced team focus, performance and delivery; a stronger organizational culture with improved employee output alignment with strategy, resulting in an upgraded client experience and loyalty.



## KEY TAKEAWAYS

### ENGAGEMENT

- Identify & Measure Core Competencies, Skills & Performance
- Objectively Measure hundreds of Key Human Data Dimensions
- Gain Deeper Insights Quicker
- Drive Better Decisions & Outcomes
- Solve Challenges Faster
- Gain Increased Employee Strategy Engagement, Satisfaction & Loyalty
- Decrease Employee Turnover, Replacement Costs & Training Costs.
- Increase Return on Investment (ROI) & Return on Training (ROT)

### PERFORMANCE

- Easy-to-Use Interactive Dashboards
- Build Digital Twin Teams
- Optimize Team Performance with Digital Twin Team Blueprint
- Track & Monitor Team Performance Seamlessly
- Teams Become Self-Aware of Core Competencies & Skills Quicker
- Teams Become Faster - More Flexible - More Resilient
- Align Individual & Team Performance with Strategy Engagement Faster

### RESILIENCE

- Expanded Communication, Innovation & Leadership
- Improved Employee Response & Engagement
- Enhanced Team Focus, Performance & Delivery
- Stronger Organizational Culture
- Improved Employee Strategy Alignment Output
- Upgraded Client Experience & Loyalty
- Increased Company Reputation & Stability

## How We Enhance



### ENHANCED EMPLOYEE ENGAGEMENT

CCI offers the world's first and only Team Performance psychometric assessment platform designed to identify, measure and evaluate Team Performance, core skills and competencies, and identify performance & opportunity gaps.

HR professionals and team leaders can now objectively measure human factors with **greater insight to drive better decisions**, achieve better business results, and overcome organizational challenges. CCI provides targeted solutions that delivers increased ROI and employee retention, decreased employee turnover, replacement and development costs while **increasing employee strategy engagement, satisfaction and loyalty**.

### ENHANCED TEAM PERFORMANCE

Your teams become faster- more flexible – more resilient.

CCI Team Performance Assessments empower your teams to **accelerate outcomes, embrace change, and bounce back from adversity** through data-driven insights and curated training solutions.

With your Digital Twin Team models and ongoing survey feedback, you optimize team composition, track short & long-term performance, reveal development opportunities, gain real-time insights, **identify High-Performance Team DNA to duplicate in other teams**, align employee skills, competencies & culture with organizational strategy and goals to maximize performance and drive outcomes.

### ENHANCED ORGANIZATION RESILIENCE

To begin, we enhance your staff's core competencies and skills through in-depth data-driven team assessments and transformative solutions improving employee **retention, commitment, performance** and strengthening your company's reputation & stability.

Next, our interactive team results dashboard lets you build Digital Twin Team models of your current staff to quantify & track performance. This ensures you have **the right people & the right talents aligned on the right teams** to achieve superior team effectiveness & performance.



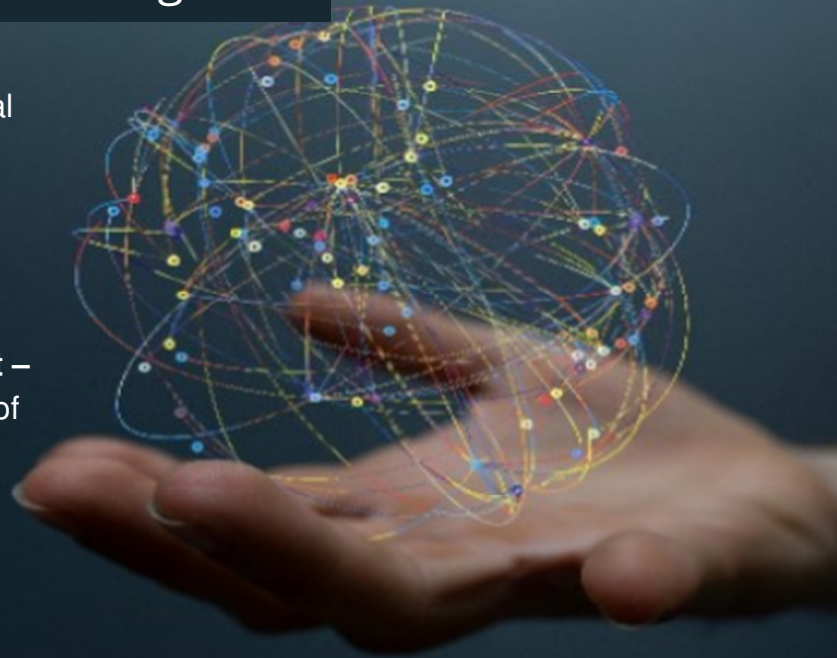
Then enhanced employee fulfillment and motivation, combined with improved team effectiveness unlocks expanded communication, innovation, and leadership from all stakeholders. This leads to **better employee engagement response, increased team focus and performance, stronger organizational culture, and improved strategy alignment**. Ultimately, upgrading client experience & loyalty, delivering enhanced organizational resilience and reputation.

# The Power of 3D Human Data Intelligence

**All organizations must learn and adapt to succeed** in today's constantly changing global economy. Simply reacting to change is not enough, and anticipating change without proper information is just guessing.

**To fully capitalize on opportunities presented by Enhanced EPR (Engagement – Performance – Resilience)** and meet goals of reducing costs and increasing productivity, organizations must place human innovation and performance at the forefront.

We can help.



**Human Data Intelligence and CyberPhysical Systems** help organizations maximize opportunities faster by adapting to their workforce's ever-changing skills and conditions.

To enhance human capital, organizations must identify key elements such as critical competencies to execute strategy, pinpoint current & in-coming staff skill gaps, create curated training plans & develop required competencies.



**At CCI, we help you maximize your Human Data Intelligence to identify, target and deliver value in 3 key areas - Setting Direction, Predicting Problems and Filling Strategic**



Being able to Set Direction – Predict Problems – Fill Strategic Gaps provides HR leaders greater flexibility and insight to grasp intangible elements that impact performance, such as hiring employees who don't fit the existing team dynamic, culture or vision.

With Data-Driven insights, organizations can get ahead of issues, boost team productivity, increase training ROI, and make better real-time decisions faster to drive more successful strategy-aligned outcomes.



## 3D Assessment for Deep Insight

Deploying the World's 1<sup>st</sup> and only AI-enhanced psychometric Team Performance Assessment platform, CoreComm International helps clients build clear, accurate 3D Employee Assessment and Digital Twin models.





Now, for the first time, decision makers have a seamlessly holistic view of their employees & teams to discover deeper and more accurate insights than ever before.



With simple-to-use online dashboards, HR & Team leaders can now easily assess team members current compatibility, skill & competency sets as well as current dynamics from over hundreds of human data dimensions, from conscientiousness to risk-taking behaviour and more. For increased Team Engagement & Performance, CoreComm International is your first step in building out your Human Data Intelligence and Digital Twin Team Framework.

## 3D Assessment MIRA Insights & Benefits



-  **Match** achievement of Vision & Strategy with team performance, skills & competencies to duplicate High-Performance Team DNA faster
-  **Identify** mission-critical skills, competencies & gaps faster to Increase Team Performance faster
-  **Reduce** training process, cycle, times & costs, skill & competency gaps faster – drive engagement
-  **Achieve** greater accuracy hiring new employees, deciding C-Suite succession, and reducing risk

# Increase Engagement Performance & Resilience

- ✓ Identify Key Competencies & Gaps
- ✓ Easy-to-Use Online Dashboards
- ✓ Measure Team Performance Seamlessly
- ✓ Duplicate High-Performance Team DNA
- ✓ Increased Development ROI & ROT
- ✓ Increased Organization Resilience





## Areas of Expertise

CCI focuses on 5 Core Integrated Areas to help move your organization to the next level of strategic alignment and achieve your vision and goals.

Our consultants apply best practices, proven professional experience, strategic design-thinking approach and insight to help clients connect their people & culture to their strategy & vision.



## Our Services



### HUMAN DATA INTELLIGENCE

- 3D Human Data Assessments & Analysis
- Integrated Competency Mapping
- Build Digital Twins & Teams
- Easy-to-use Online Dashboard
- Duplicate High-Performance Team DNA Faster



### MANAGEMENT DEVELOPMENT

- Leadership
- Executive Coaching
- Professional Skills Training
- Communication & Language Training
- Team Assessment & Insight Development



### INNOVATION & TRANSFORMATION

- Change Management
- Digital Transformation
- Innovation Development
- Team Performance & Assessment



### CYBER SECURITY

- vCISO
- Cyber Security
- Secure Architecture
- Security Assessment
- Security Screening
- Training & Development



### INFRASTRUCTURE SECURITY

- Strategic Facilities
- Intelligence Analysis
- Business Continuity
- Threat Screening & Assessment



## Data-Driven & Outcome Focused

CoreComm International is your partner in best practices for identifying, targeting & implementing curated solutions to achieve your strategic vision and goals.



**20K**

**Enhanced  
Professionals**

**500+**

**Successful  
Projects**

**55+**

**Years  
Experience**

**20+**

**Industries  
Supported**

CCI Field-experienced solution consultants understand how to implement strategy, processes, and policy, leading change to drive outcomes.

We partner closely with you to ensure that our recommendations fit your company culture and vision, in real-world environments.

